



WOMEN AND RECONSTRUCTION

Lumanti Joshi

Housing Programme Manager

Lumanti Support Group for Shelter

Tokyo, 20th November, 2019

1



CONTENTS

Introduction to Lumanti

Why work with Women?

Organizing women

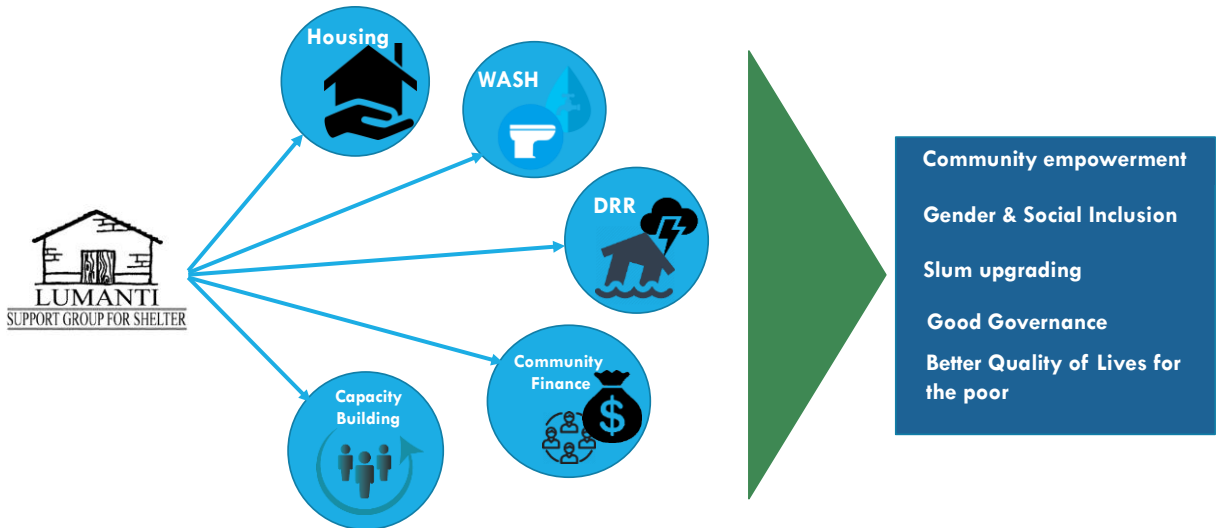
Women and Reconstruction

Key Message

Impact

2

INTRODUCTION TO LUMANTI



3

WHY WORK WITH WOMEN?



Context of Poor Communities

Marginalized and discriminated

Dependent

Lack of equal opportunities

No power on decision making-House or community

Vulnerable to Disasters

4

ORGANIZING AND EMPOWERING WOMEN

Organizing **women** through **saving**-supporting each other

Established **40** women's saving and credit cooperatives plus number of self help saving groups with **35,000** members

Total saving in the **40** cooperatives **Rs. 15.4 Million**, mobilized for various purposes such as **housing, income generation, education**

- Women have **easy access** to finance
- Women **make decisions** on finance
- Women **formulates policy** for finance

Supported women **to advocate and lead** number of development projects

Contributed in **capacity enhancement** of the grass root women leaders

5

POST EARTHQUAKE SCENARIO



25th April, 2015 and 12th May 2015-14 districts severely affected 13 districts severely affected & 17 districts moderately affected

Total no of houses damaged-767705
Total no of partially damaged houses-256,697
Total no of deaths-9000
Total no of injured-23,000



6

COOPERATIVE MANAGED SUPPORT

Community/Women led approach

- Cooperatives assess the shelter needs
- Identify the most vulnerable families
- Flexibility in using the fund as needed
- Serving maximum families with limited fund
- Linking with other organization working for protection, WASH etc.
- Supervision of the construction
- Conflict management

Mobilization of technical volunteers

- Damage assessments
- Construction of temporary shelters
- Knowledge Sharing on build back Safe

Raising fund/Using their own funds

- Managed communal kitchen
- Distribution of relief goods

Coordination with local governments

Selection Criteria

- Extremely poor families who had lost their homes and belongings
- Women headed families
- A large family with many children, pregnant women or with babies.
- Families with old people and people with illness and disabilities

Cash grants

Support for temporary shelters

Livelihood grants

Reconstruction of homes

Advocacy resettlement of IDPs



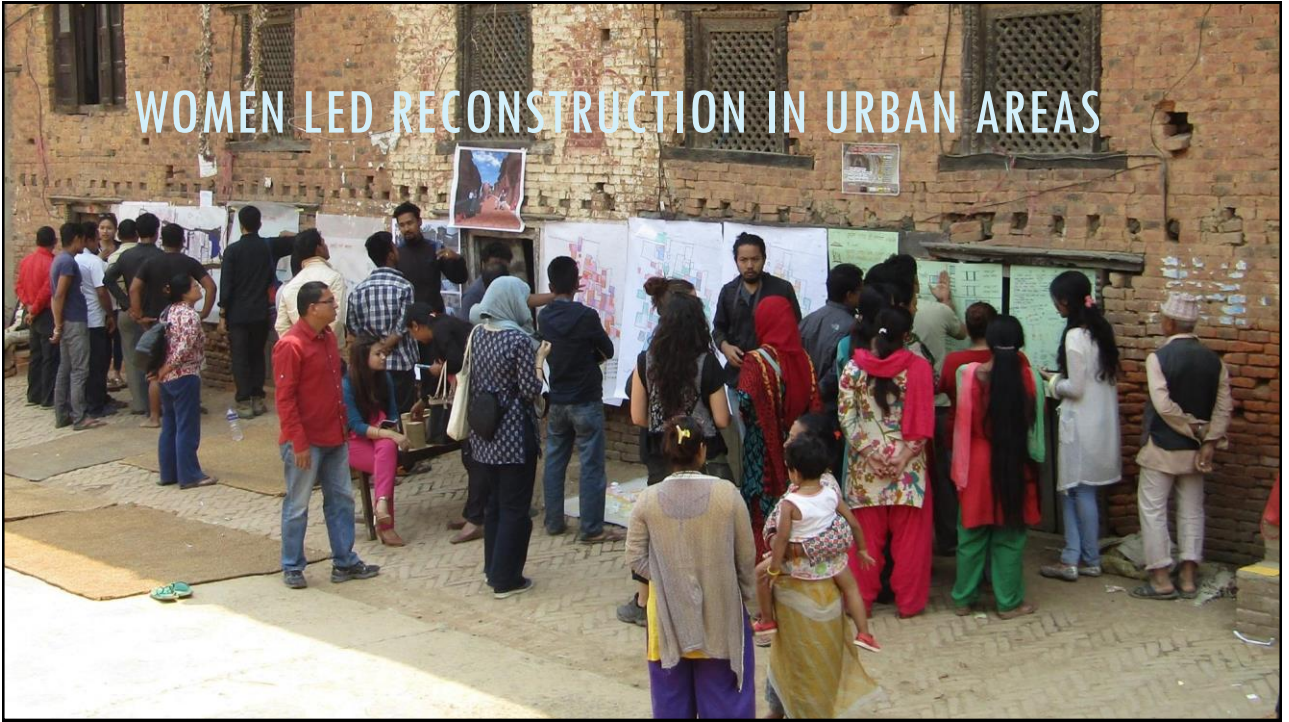
7

TEMPORARY SHELTER SUPPORT



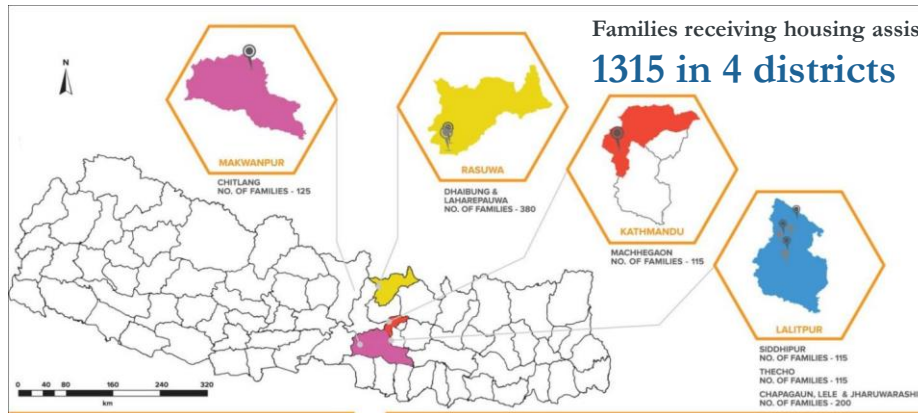
Supported 6000 families in construction of temporary shelter

8



9

LUMANTI'S SUPPORT IN RECONSTRUCTION



Engaging the
women
cooperatives

Collective
Reconstruction

Coordination
and Partnership

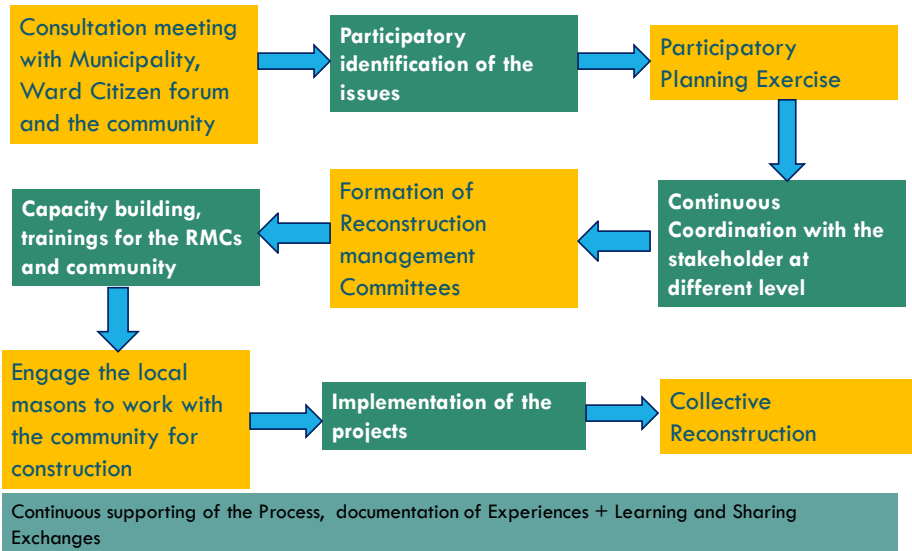
Capacity
Building &
technical
assistance

Owner Driven

Utilization of
local Resources,
Knowledge and
Resources

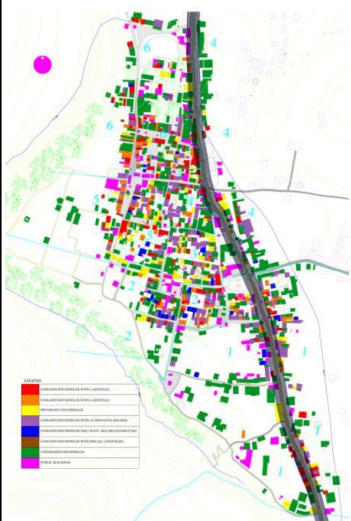
10

PROCESS IN RECONSTRUCTION



11

MAPPING AND FAMILY SELECTION FOR RECONSTRUCTION



- HH damage grade mapping
- Land issues mapping (ownership, plot size, informal swapping)
- Infrastructure issues
- Mapping out the risks in the community
- Brainstorming for solutions
- Policy recommendations

Community Participation in Mapping with active participation of women



12

IDENTIFYING ISSUES ENGAGING LOCAL WOMEN GROUPS



Mapping of damage categories



Mapping of land title status

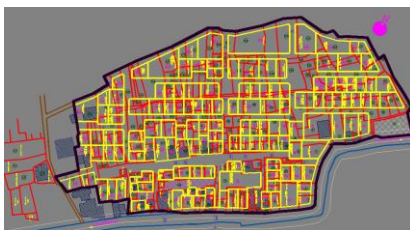


Mapping of land parcel

Results of Land issue mapping in Thecho

13

WORKING WITH THE COMMUNITIES



Communities in the decision making position Facilitation and coordination led by the cooperatives

14

PRESENTING A PLAN



15

SUPPORTING THE POOREST

Additional Funding Support

Loan Support from the Cooperative

Incremental Design

Reusing the Salvaged Materials



16



PLANNING THE COMMUNITY INFRASTRUCTURE



17



WOMEN IN RECONSTRUCTION

Supporting for 1315 units of housing (with grant fund)

Priority given to vulnerable, poor single women headed families

Technical support to more communities

Community led approach to ensure 'LEAVE NO ONE BEHIND' and expedite the reconstruction work

Reaching house to house through women to give information on 'Build Back Better'

Local women as social mobilisers

Encouraged women to participate in mason training

Additional support to dalit and vulnerable women families

18



WHY IT WORKED

Years of investment (money, time, skill, knowledge, confidence, relationship, trust) on building women's cooperatives / groups / network / leadership

Years of preparatory activities in building resilience (planning, mapping, training, simulation exercise, stockpiling, livelihood), Infrastructure, deep boring , water treatment system

Existence of saving fund with the cooperatives

Linkages / partnerships with the support organizations and government agencies

Flexibility in adapting the approach that contributed in building women's network and strengthening resilience (mobilization of resource, communal procurement for recovery and reconstruction)

19



KEY MESSAGE

Community/ women led process is cost effective, builds community, maintains peace and social harmony, conserve culture and heritage and fasten the process of delivering services.

Community led process should be the policy and supported for implementation.

Understanding of local context and consultation is very important.

Decentralized decision making at local level strengthens partnership between communities and the local governments.

Linkage between emergency support and long term sustainable development is a must.

20

IMPACT

- Development of institutions
- A strong resource base
- Contribution in local economy
- Partnership projects
- Empowered women
- Silent transformation of society

21



22