



#ResilienceforAll

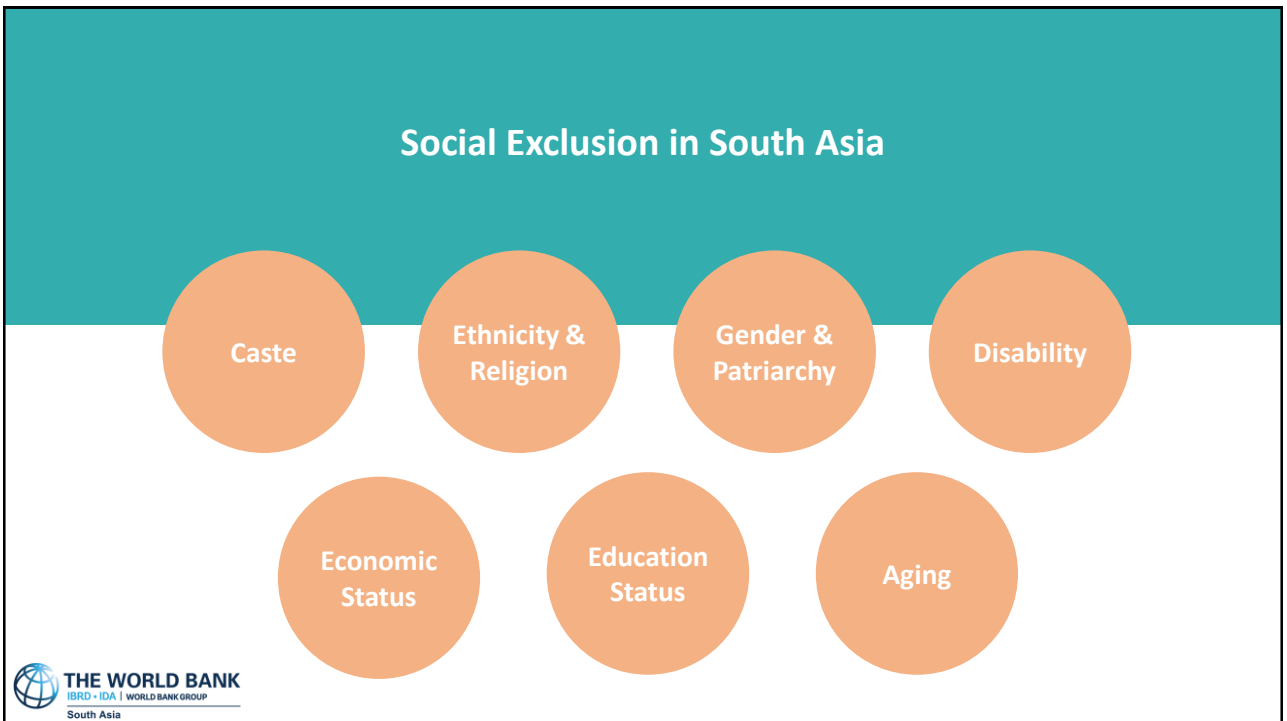
**South Asia –
Where Resilience
and Inclusion Meet**

Are we building Resilience for All?

Keiko Sakoda
Disaster Risk Management Specialist
World Bank



1



Social Exclusion in South Asia

Caste

Ethnicity &
Religion


Gender &
Patriarchy

Disability

Economic
Status

Education
Status

Aging

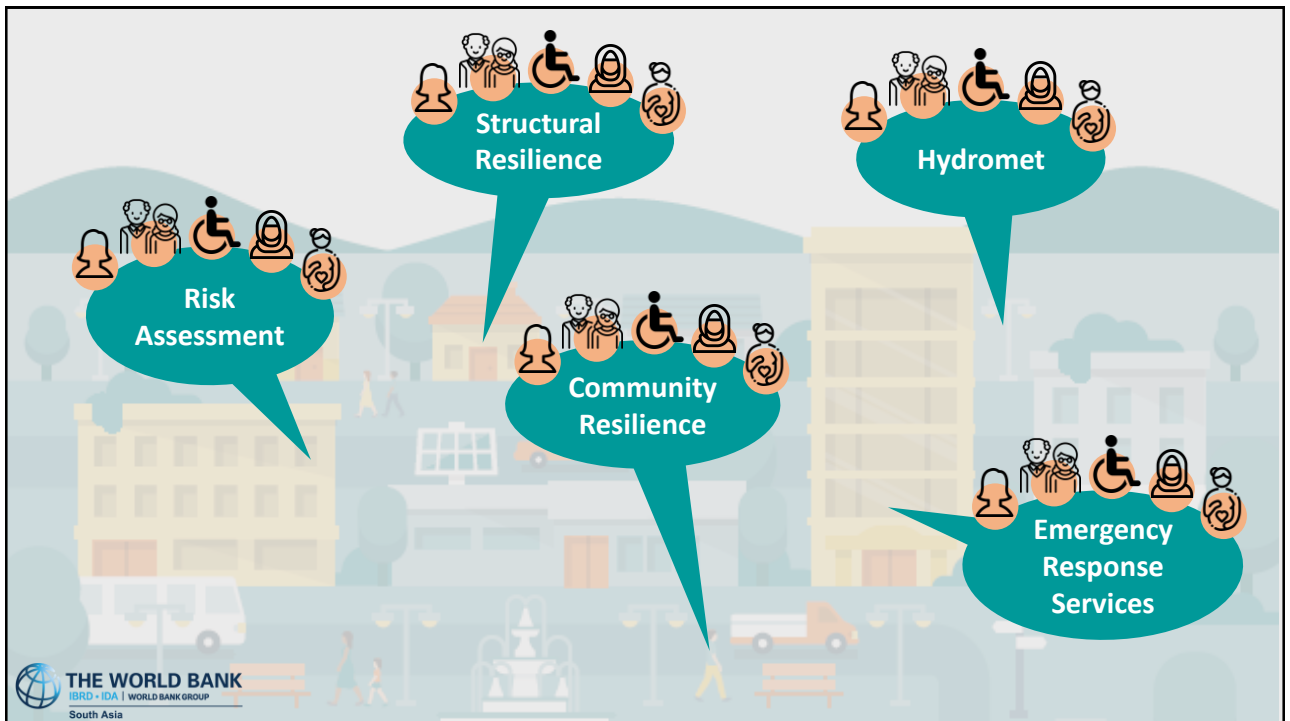


2

Do we know what makes DRM projects more socially inclusive?

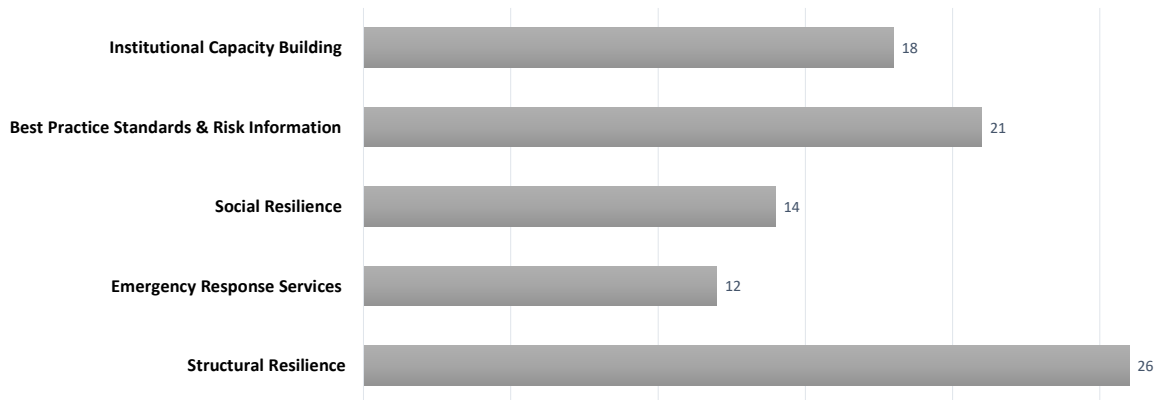


3



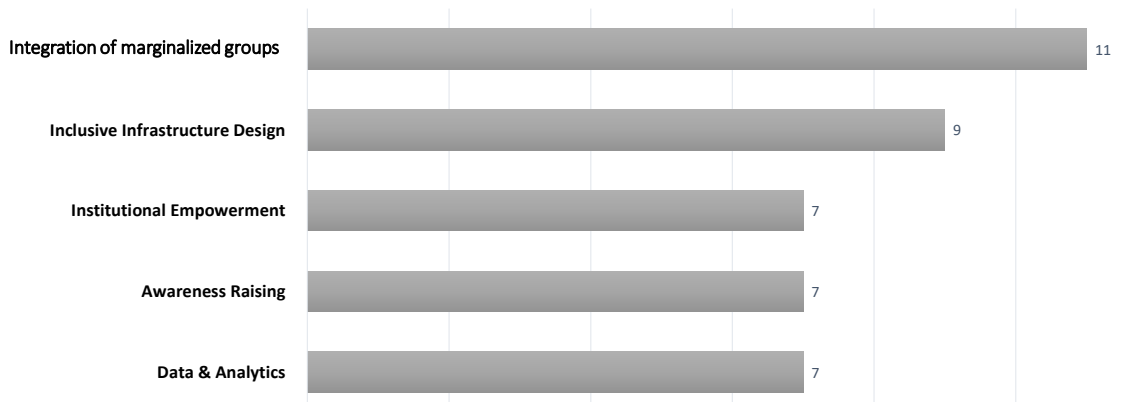
4

What are highly-demanded DRM topics in South Asia?



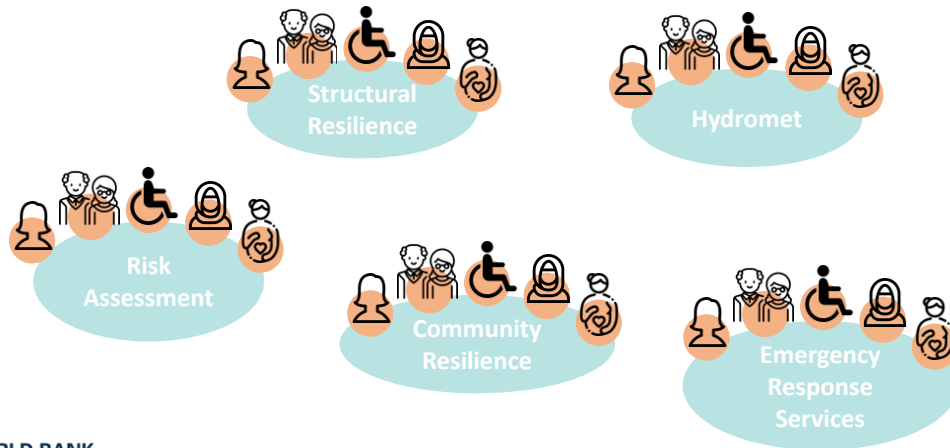
5

What are existing Social Inclusion activities in DRM projects?

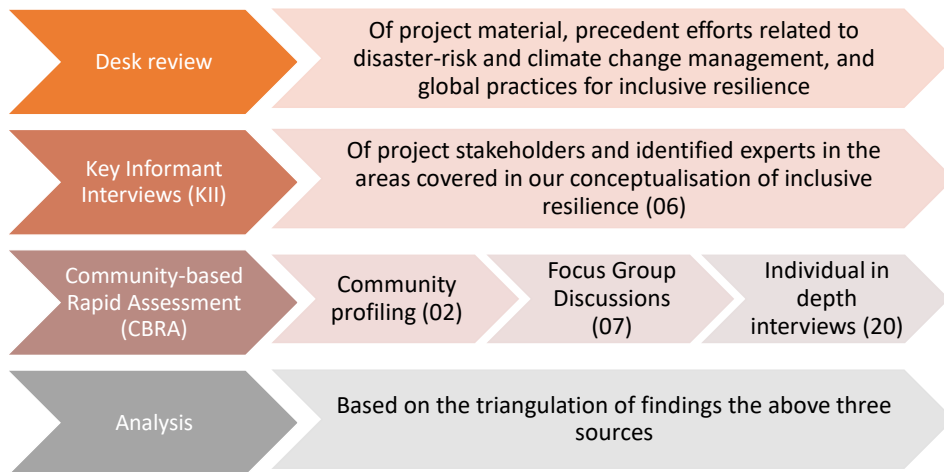


6

Social Inclusion Entry Points



Our approach



Targets

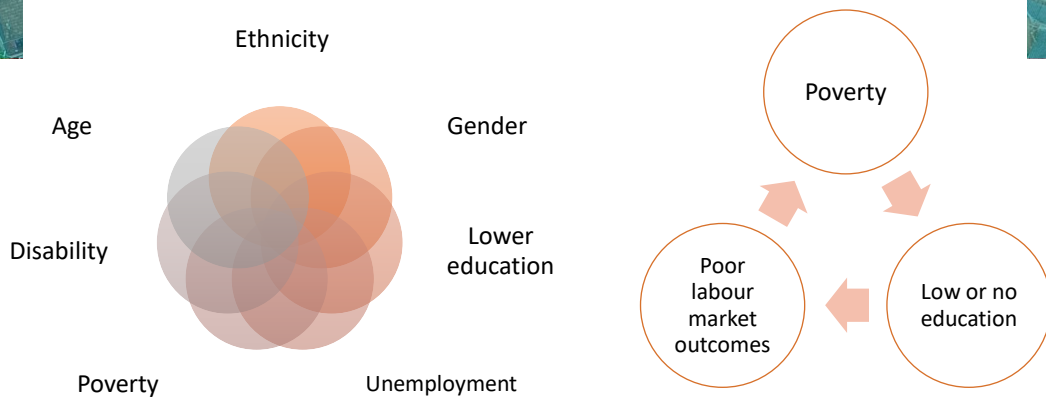
Existing or New World Bank Projects in

- Bangladesh
- India
- Nepal
- Pakistan
- Sri Lanka

9

Sri Lanka: What makes people vulnerable?

WB Project: Climate Resilience Multi-phase Programmatic Approach



10

Sri Lanka: How can World Bank project address social inclusion in DRM project?

Project Activities

Early Warning

Flood Risk Mitigation Infrastructure

Resettlement

Social Inclusion Entry Points

- Inclusive message delivery
- Inclusive evacuation protocol

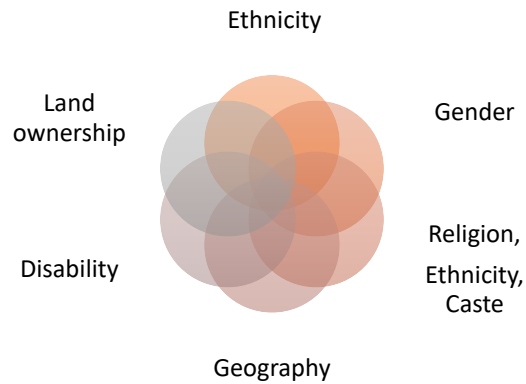
- Connect people and river
- Engage community for design, monitoring and maintenance

- Special and priority supports for the vulnerable
- Female- or Joint ownership of land and assets

11

Pakistan: What makes people vulnerable?

WB Project: Sindh Resilience Project



12

Pakistan: How can World Bank project address social inclusion in DRM project?

Target Project Activity

Community-based Disaster Risk Management (CBDRM)

Social Inclusion Entry Points

- Adopt a More Holistic Approach to CBDRM
- Strengthen Outreach to and within Communities
- Improve training Content and Process

13

Next Step



- What is needed for implementation?
- Does this approach applicable in other countries and regions?

14