



सीना पिरोना है धन्धा पुराना
हमें दो दुनिया गर रफू है कराना
सिना پروना है دهندها پُرانا
ہمیں دوویہ دنیا گر رفو ہے کرانا

Kiran Bhatia
The World Tsunami Awareness
Day
International Symposium, 27
October 2016

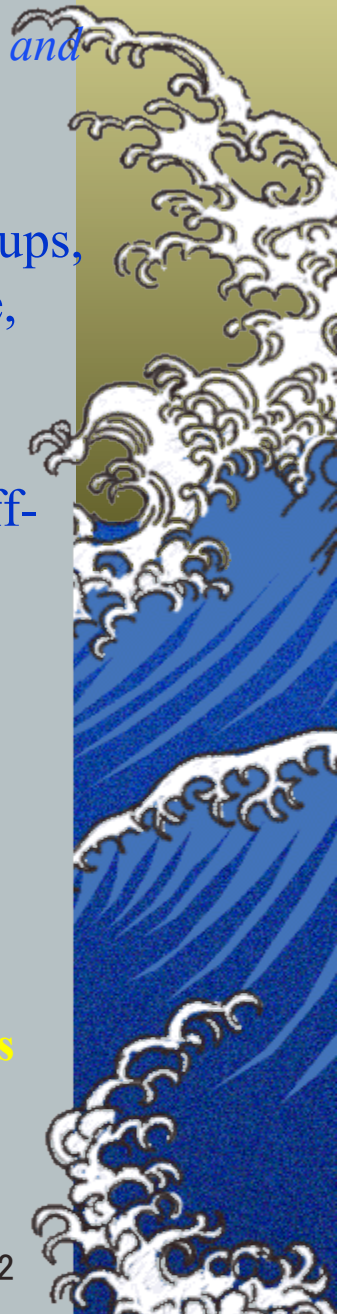
SDG's: "No one will be left behind"

- ✦ *Inequality is a primary theme that permeates nearly every one of the goals and many of the targets. To ensure achievement for all,*
- ✦ **Disaggregation beyond age and sex:** The data for monitoring progress towards most goals must be disaggregated by relevant groups, including socio- economic class, gender and sexual orientation, age, ethnicity, disability, rural or urban location, legal status, and other characteristics that can lead to discrimination.
- ✦ **Participatory Monitoring:** Rather than utilizing a centralized, staff-based research approach, participatory monitoring relies on civil society actors to facilitate subjective feedback and monitoring by members of poor and marginalized communities.
- ✦ **Citizen initiatives :** Community findings and priorities brought forward to hold governments accountable for progress towards the development goals.

Example of such a civil society proposals being tested:

The Frontline project by the Global Network of Civil Society Organizations for Disaster Reduction (GNDR)

World Inequality report 2016:Deborah S. Rogers



DATA DATA DATA !!

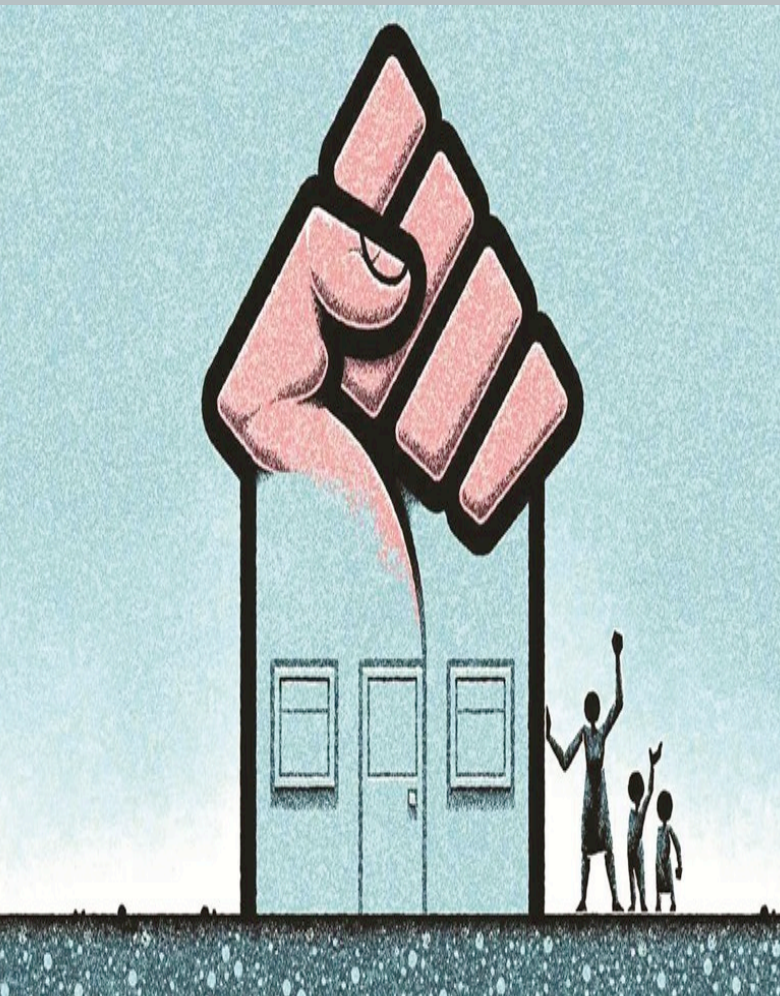
▲ **Disaggregation:**
NOT only sex but also social
exclusion

▲ **Technical Skills for every
stage: collection,
management, analysis,
dissemination**

▲ **Participatory Monitoring**

▲ **User friendly access**

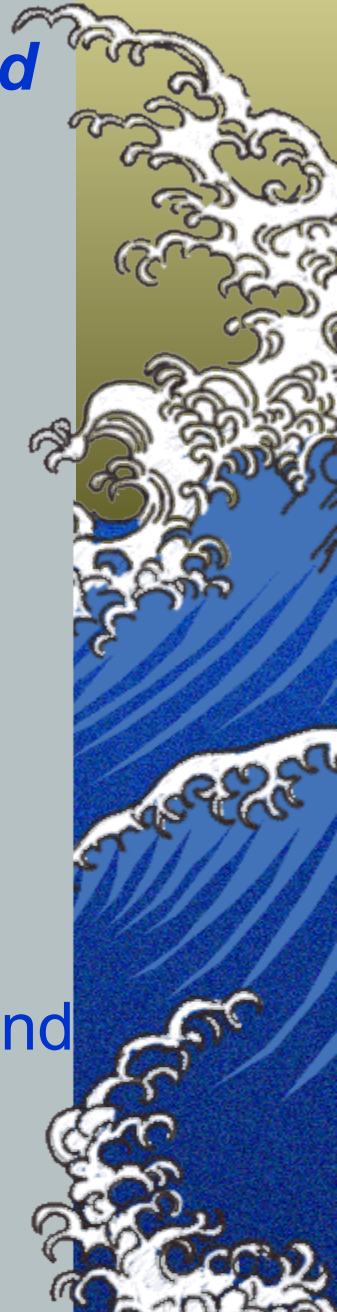
▲ **Evidence based advocacy**



Women's Leadership in DRR

Dedicated, sustained and targeted actions needed through:

- ▶ **Long term efforts** to change perpetuating gender inequality and discrimination against women, which systematically hinder women's participation and leadership
- ▶ **Investments** to increase opportunities, resources and capacities for women to engage in disaster risk reduction
- ▶ **Capacity building** :Education, access to training and information to strengthen the engagement and participation of women



Recommendations: 1

Accountability

- Build capacity of local governments to collect relevant data that are in line with recommended enhanced monitoring system
- Use participatory mechanisms for collecting and updating local data and include woman's groups and networks as a mandatory stakeholders.



Recommendation:2 Policy and planning: resourcing, financing and budgeting

- ★ Mandatory use of gender disaggregated data and gender analysis in assessments (needs assessments, damage and loss assessments), planning, implementation, M&E of development and DRR program.



Recommendation 3: Policy and planning: better informed decision making process

- Policy to support and guide context specific gender analysis in planning.
- Planning tools for risk assessment should look at gender disaggregated risk reduction and prevention, with setting appropriate standards.



Recommendation 4: Have common gender accountability in global commitments

- ▶ Actions post SENDAI should be complimentary with other relevant international conventions
- ▶ Develop a set of common targets and indicators to achieve women's empowerment and facilitate women to become a force in resilience building, through the implementation of the Sendai framework, and SDG goals.



Recommendation 5: Capacity building of planners and officials changing perceptions on gender roles in DRM and resilience building

- Awareness building of professionals in SDG/CC/DRR on gender inclusive/gender sensitive approach to planning and implementation.
- Awareness building at the local level (LG and community) on gender inclusive approach to development and DRR



Recommendation 6: Reduce women's social vulnerabilities

- Innovative pilot projects in each country that demonstrates better engagement of women in local DRM and resilience building; where women have increased access and control of livelihood resources, capacity building, markets, finances etc. and better claim to post disaster assistance which could result in less loss and damage in disaster situations.
- Invest in sustainable technologies for DRR and CCA which foster women's resilience.



Recommendation 7: Strengthen capacities of women

- Strengthen existing local knowledge and capacities of women in emergency management DRM and resilience building.
- Use local knowledge recognizing women's knowledge and roles they play, to protect, rebuild and sustain ecosystems.



Responding to gender and social equity;

Lessons learnt- the way forward

How can participative and gender sensitive inclusive processes be supported at all levels and at all stages?

Make it everyone's business!

- *Gender and social equity capacity building must be a core pre-requisite for all agencies staff at all levels.*
- *Integrate in all other training programmes*
- *Set up structures for feedback from community women, young people*
- *Demonstrate value of local knowledge and skills.*
- *Adapt approach to be more inclusive*
- *Provide additional priority and resources for investing in women and girls;*
 - *Form separate groups*
 - *Include in key positions in community management bodies*
 - *Carry out social audits/mapping through women's and youth groups.*



What can you do :In a nutshell

Get updated on evidence on why this will make a difference in your work

Consult with technical specialists who practice gender inclusive reconstruction

Go out to the community and dialogue with women and girls. Visit to observe good practices Review success stories.

Invest in your staff and your self to learn about the why and how it works to address gender and social inclusion in your work. Support learning events and training on Gender and social analysis for reconstruction post disaster

Review your own institution. Support a gender analysis to assess policies, procedures, budgets, norms and practices and find out how equitable they are

Rethink assumptions about gender stereotypes both professional and personal - Be the change you want to see